

THE HIGH CHAMBER

BY PAUL LINSE

Important meetings demand an impressive boardroom, and when you enter the High Chamber, you know you've come to the right place. This boardroom features a round table set-up and an elaborate collection of Dutch Design.

MEET THE
EXTRODINARY



8 persons



Go next level with our event producers



18 M2



Creation of a Dutch designer



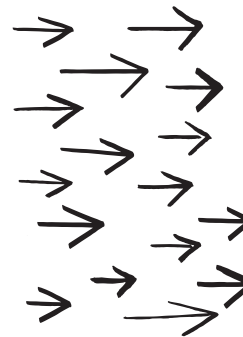
Superfast wifi



Catering on location possible



LCD screen + video calling










INTERESTED?

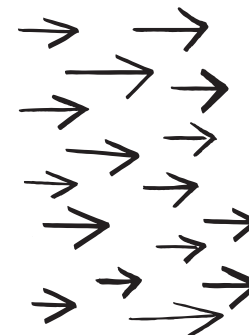
Please contact us at:

Capital C
Weesperplein 4B
1018 XA Amsterdam
events@capitalc.amsterdam
+31(0)20-24 77 00 0
www.capitalc.amsterdam

ROOMS AND SET-UP

The High Light can be rented entirely or in various parts and combinations.
We have flexible walls that can (un)lock the spaces in all kinds of combinations.

Floor	Event Space							
6	The Above	70	70	30	25	25	-	-
6	The Beyond	60	60	30	25	25	-	-
6	The Upperclub	70	70	30	25	25	-	-
6	Above + Beyond + Upperclub	200	150	-	-	-	-	-
6	The High Chamber	-	-	8	-	-	-	-
6	The Upper House	-	-	8	-	-	-	-
6	All rooms on 6th floor <i>*Excluding The High Brow Bar</i>	250	250	-	-	150	-	-
6	The High Brow Bar	150	-	-	-	-	40	-
6+7	The High Brow Bar + The Top Dog	400	250	-	-	-	230	230
6+7	The High Light Exclusive	400	250	-	-	-	230	230



INTERESTED?

Please contact us at:

Capital C
Weesperplein 4B
1018 XA Amsterdam
events@capitalc.amsterdam
+31(0)20-24 77 00 0
www.capitalc.amsterdam